

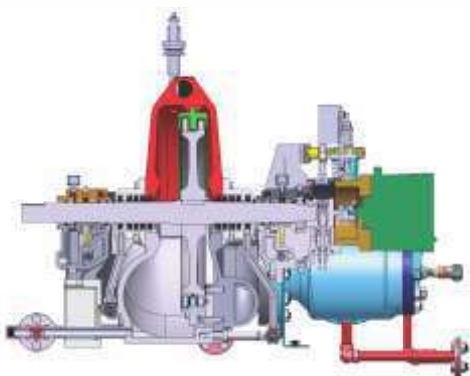
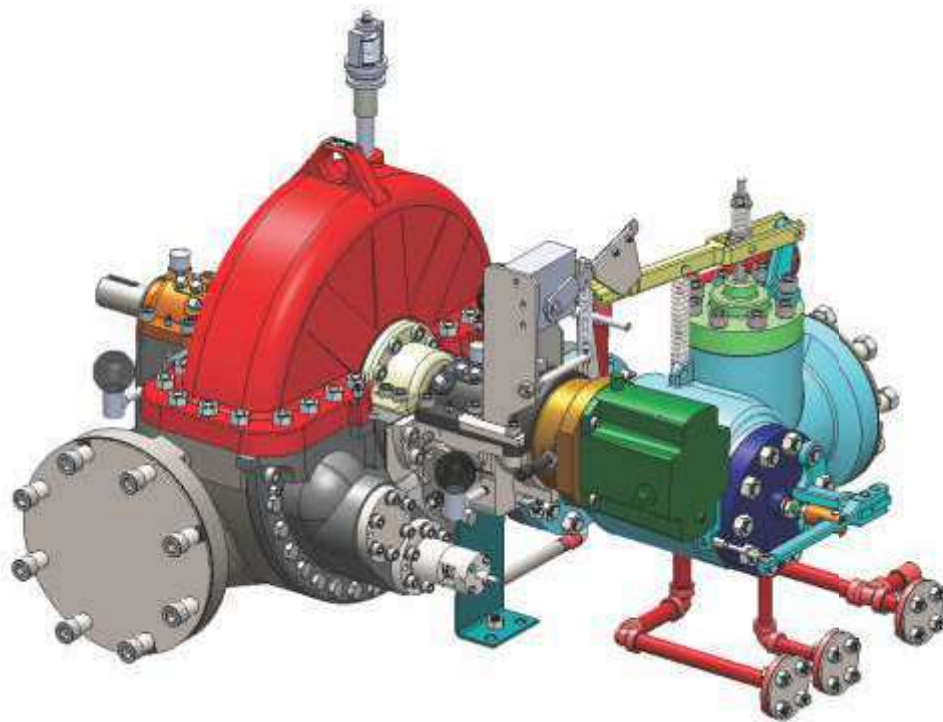
# DRIVE TURBINE

# K-Tur – World Class Turbines...

The name KEPL, in India, is synonymous with:

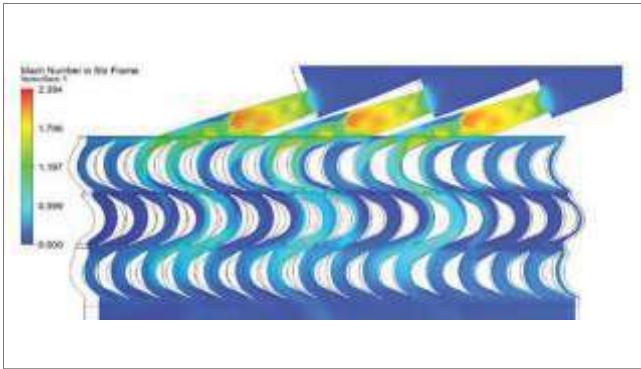
- Indigenously manufactured installed base of over 220 API 611 Steam Turbines in the faithful service of Oil and Gas companies
- Expertise and skilled people with deep technical skill in supporting various consultants such as EIL, TCE, TKIS, PDIL, FLUOR, TECHNIP etc. from concept through execution of projects
- Providing Global Quality Product to Users, by the people who truly understand their needs

In the Era of “make in India”, KEPL has been proudly continuing giant leap from “made in India” to “Engineered and Designed in India” and continuing our promise to serve you through world class quality, reliability and commitment. It has been our immense pleasure to convey that we are the first company in India to undertake the development and manufacturing of API 611 compliant Steam Turbines.

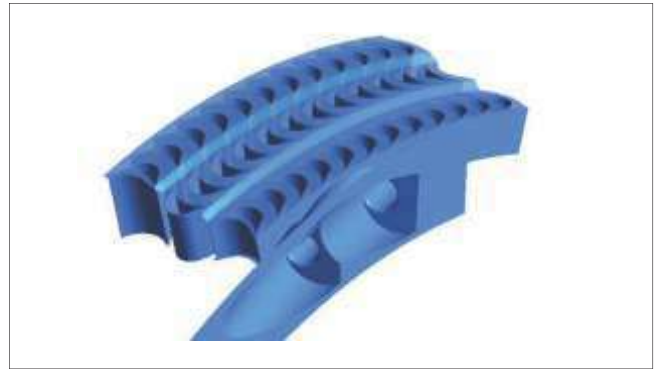


The present range of the turbines is as under:

Frame	KT-B	KT-D
Power (in Kw) *	Upto 1000	Upto 3000
Maximum Inlet Pressure (Bar)	48	63
Maximum Inlet Temperature (°C)	480	480
Maximum Exhaust Pressure (Bar)	10/25	10
Maximum Speed (RPM)	5700	5700



Blade Rows 2D Model



Blade Rows 3D Model

KEPL maintains its customer delight by ensuring delivery of complete turnkey packages customised as per the requirement specified by the customer. A team of well-trained engineers is geared up to provide prompt services for the entire spectrum from pre bid support to project execution, right upto erection and commissioning of turbines.

With vast experience of working with large spectrum of the consultants and end users for meeting their needs of steam turbines, we would like to draw your attention to the following important aspects:-

### Highest Quality and Reliability

KEPL is an approved manufacturing facility by major global Oil & Gas, Petrochemicals end users and consultants; especially those from the Middle East and Western Europe.

### System Engineering Capabilities

Capable of Design and Development of customized Control System for Steam Turbine applications & Steam Piping Design

### Acceptance

More than 200 core turbines manufactured at KEPL factory in Kirloskarvadi, India since 2003.

### International Quality

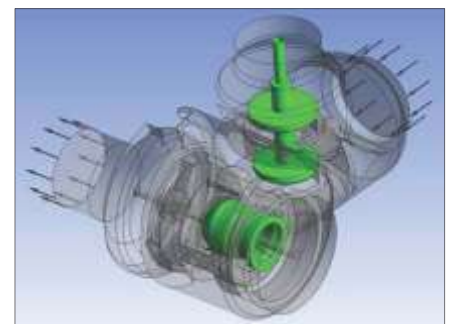
KEPL has exported around 9000 turbine components manufactured at KEPL works, to international OEMs for various API compliant turbines installed around the world.

### Exhibited performance

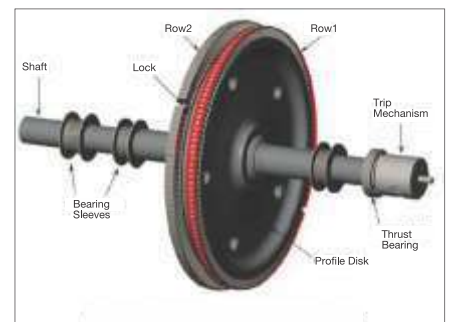
The Steam Consumptions offered, Control System designed etc. during bidding stage are proven in totality during the performance trials or during regular operations at site.

### Value for Money

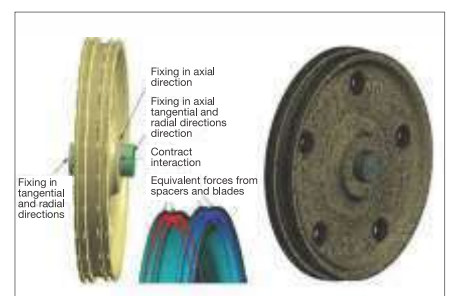
API 611 & API 612 compliant Steam Turbines manufactured in India



Trip Valve and Governor Valve



Solid Model of Rotor Assembly



Disk + Shaft FEA Model

### Mechanical Drive Applications

- Process and Cooling Water Pumps
- Lube Oil Pumps
- Boiler Feed Water Pumps
- Condensate Extraction Pumps
- Forced Draft Fans
- Induced Draft Fans
- Compressors
- Blowers

### Segments catered to

- Oil and Gas
- Refinery & Petrochemical
- Chemical
- Fertilizer
- Process
- Steel
- Pulp and Paper Mill
- Sugar

### Advantages

- Low initial cost
- High reliability
- Short lead time
- Compact design
- Interchangeability of parts
- Quick start capability
- Variable speed capability



## **KIRLOSKAR EBARA PUMPS LIMITED**

Registered Office: Pride Kumar Senate Building,  
Senapati Bapat Road, Pune - 411016, Maharashtra (India)

Corporate Office: Yamuna, Survey No. 98/(3-7), Baner,  
Pune - 411045, Maharashtra (India)

Email: [kepl@kepl.in.net](mailto:kepl@kepl.in.net), Website: [www.kepl.in.net](http://www.kepl.in.net)  
CIN No.: U29120MH1988PLC045865