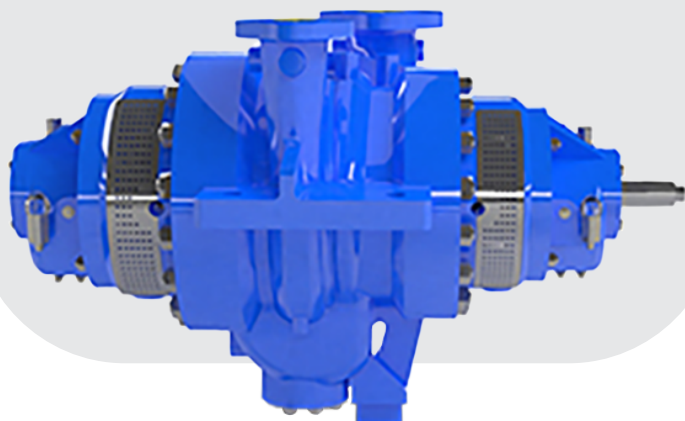


R2 (KBTS), R2D (KBTD)



SPECIFICATIONS

Parameters

R2 (KBTS)/R2D (KBTD)

Capacity (m³/hr)

Up to 2500

Head (m)

Up to 550 m

Temperature Range °C

-70 to 450

Discharge Pressure Rating

Up to Cl. 600 #

Suction Pressure kg/cm²(g)

Up to 80

Nozzle Orientation (Suc./Dis.)

Top-Top, Side-Top & Side-Side

Standard Motor Synchronous Speeds (rpm)

1500 / 1800 / 3000 / 3600

Max. Operating Speed (rpm)

3600

Direction of Rotation

Clockwise when viewed from coupling end

Flange Ratings (#RF)

Cl. 300 / 600

The R2 (KBTS)/R2D (KBTD) is an API BB2 type process pump with Centerline support. This pump with a heavy-duty design ensures high reliability and efficiency during stringent operating conditions. It is manufactured as per API 610. The back pullout feature ensures swift dismantling and assembly. This range of pumps come with a pump head of 550 m, with a discharge pressure of up to Cl. 600#. Nozzle orientation as the and top-top, side-top, side-side. The direction of rotation is clockwise from the coupling end and anti-clockwise is also possible if required. The R2 (KBTS)/R2D (KBTD) pump is suitable for applications in oil refineries and petrochemical industries and chemical and allied industries. The pump is designed to have maximum parts interchangeability.

APPLICATIONS

- Fluid handling in oil refineries and petrochemical industry
- High temperature and high-pressure critical applications in chemical and allied industries
- A variety of materials for the construction of the pump and seal flushing plans are available to cater to customer requirements and a wide range of applications
- The pumps can also function as hydraulic power recovery turbines in chemical and process plants
- Onshore and Offshore Process

FEATURES

- Design and manufacture as per API 610 standard
- Centerline supported heavy-duty design to ensure high reliability under stringent operating conditions
- After removal of the coupling, spacer, bearings, and mechanical seals on both sides, the rotating element can be removed without disconnecting suction/discharge piping and the driver
- The R2 (KBTS)/R2D (KBTD) pump family is designed to have max. parts interchangeability
- Pump with purge mist and pure mist lubrication option
- Steam jacketed Casing

Note 1 : Anticlockwise when viewed from coupling end is also possible against requirement

Note 2 : Higher pressure class rating and higher suction pressure suitability can be offered if required

Note 3 : Higher capacity and head are possible at speed higher than synchronous motor speed